



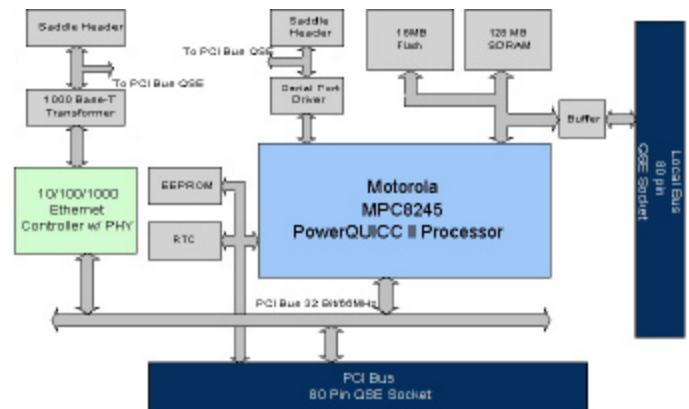
GDA Technologies' MPC8245 based Module Board

Overview

GDA Technologies' MPC8245 module board is a CPU add-on card based on Motorola's MPC8245 PowerQUICC II Integrated Processor. The board is a mere 2" x 4.5" in size, designed for applications where space, cost, power consumption and performance are critical requirements. The module board is targeted to work as an add-on card with a baseboard using QSE/QTE board stacking connectors from Samtec. The module board has a PCI interface and a MPC8245 local bus interface. The board can operate as stand alone board.

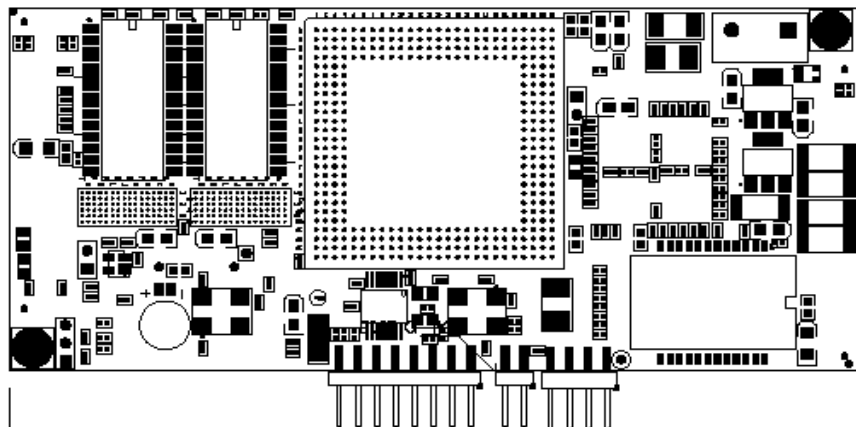
Features

- Motorola MPC8245 Integrated Processor
- 32-bit PCI bus operates @ 66MHz
- 128MB on board SDRAM
- 16MB on board Flash
- 32KB of serial NVRAM on I2C bus
- JTAG/COP Header
- Gigabit Ethernet port
- Serial port
- RTC
- 2" x 4.5" board size



Availability and Pricing

The MPC8245 module board will be available third quarter 2003. For pricing details contact GDA Sales at sales@gdatech.com.



Development
Boards

